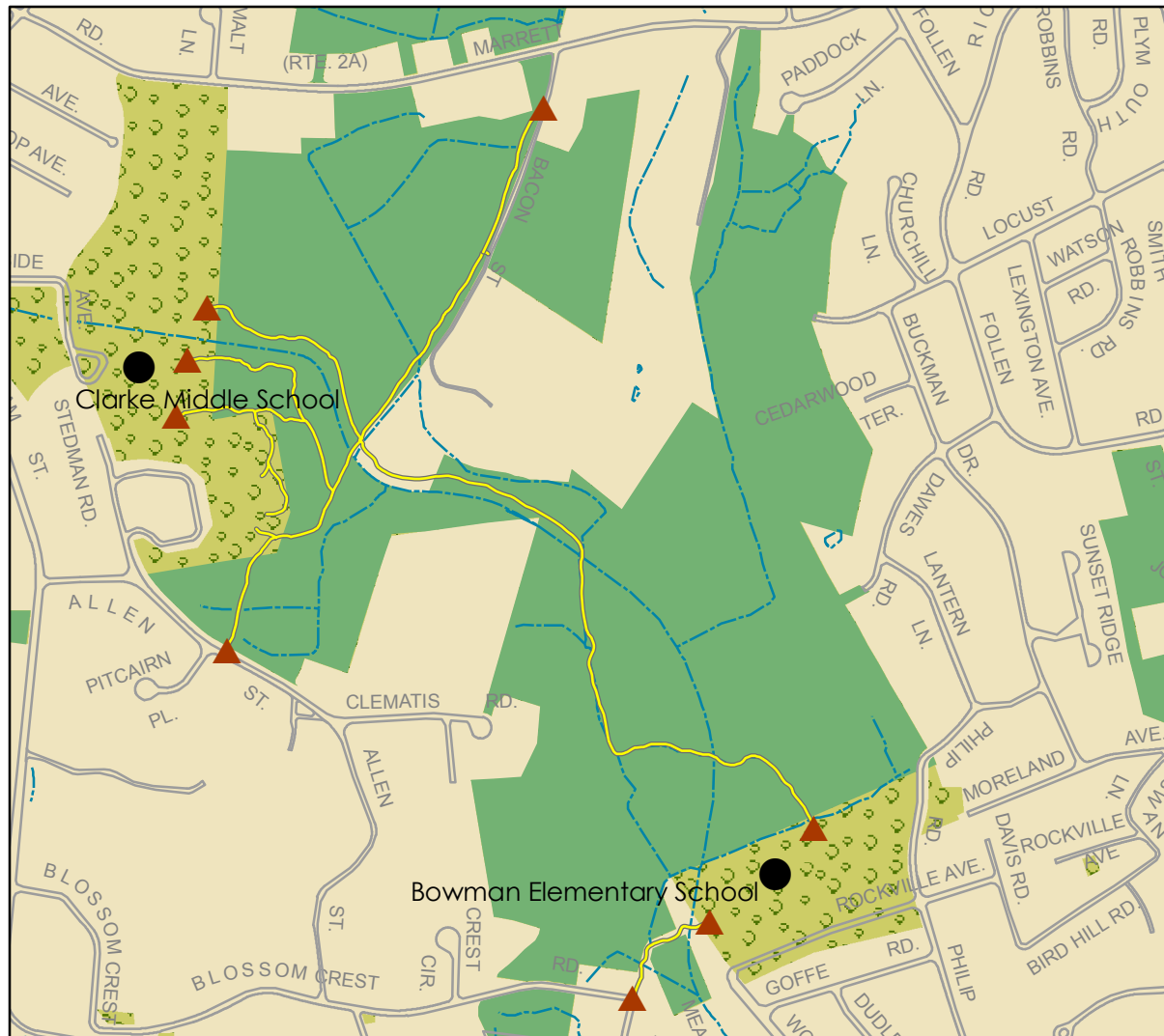


# Lexington Conservation Lands

Town of Lexington Conservation Division • 1625 Massachusetts Avenue • Lexington, MA 02420 • 781.862.0500



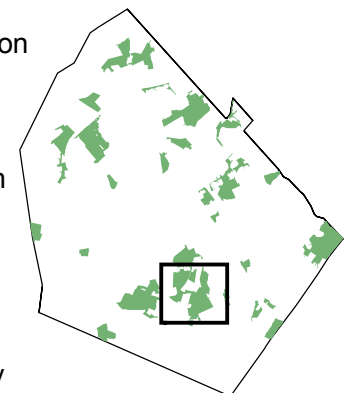
## Dunback Meadow

170.5 acres, 2 miles of trails. Dunback Meadow is the largest conservation property in Lexington and includes an extensive wet meadow, a pine grove, a red maple swamp, and a community garden. Clematis Brook flows through the area. In the past, sections of Dunback Meadow were used for harvesting peat, pasturing cows, and cutting hay. Today, Dunback Meadow is a regionally popular birding site. New boardwalks allow year-round access to this wet property.

Access is from Allen Street, from behind the Bowman and Clark schools, and from Marrett Road (along Bacon Street).

### Legend

- Trail
- Conservation land
- Entry point
- Other open space
- Street
- Stream
- Water body



Data provided by the Town of Lexington and the Office of Geographic and Environmental Information (MassGIS), Commonwealth of Massachusetts Executive Office of Environmental Affairs

